

ADC AD-50V

50-lb Capacity Coin Dryer

Standard Features:

- 50-lb. capacity
- 18.30 cu. ft basket volume
- 150,000 Btu/hr heat input, 750 cfm airflow
- Radial airflow
- Self diagnostic microprocessor
- Steel door with gasketless glass
- Easy access to lint compartment
- Fits through standard 36" door
- Available in gas, steam and electric heat

Optional Features:

- Multilingual computer displays
- Reversing basket
- S.A.F.E. (Sensor Activated Fire Extinguishing System)

COIN



AD-50V Coin Dryer

Why Purchase ADC AD-50V?

Engineer Driven Design That is Built to Last

Our dryers showcase ADC's engineer-driven approach to design. Bearings are permanently lubricated on the motor and drive system. There are no chains used at ADC; rather, we use V-belts and pulleys for smooth, quiet, and trouble free operation. Our dryer cabinets are electrostatically powder-painted inside and out then baked at 420-degrees fahrenheit before final assembly - ensuring the hardest surface and the longest lasting finish in the industry.

Rugged Steel Door with Gasketless Door Glass

Our dryer doors are one solid piece of steel with gasketless glass. This eliminates the issue of glass falling out due to wear and tear on rubber gaskets that some manufacturers use to secure their glass. The security and durability that gasketless glass provides is essential to a successful laundromat operation.

Easy-to-Read, Multilingual Controls

We were the first to bring computer operated dryers to the market and today we continue to be a leader in applying technology to dryer operation. Our years of experience along with our accessible design, easy-to-read LCD screens and our user friendly multilingual interface positions ADC as the pioneer in the laundry industry.

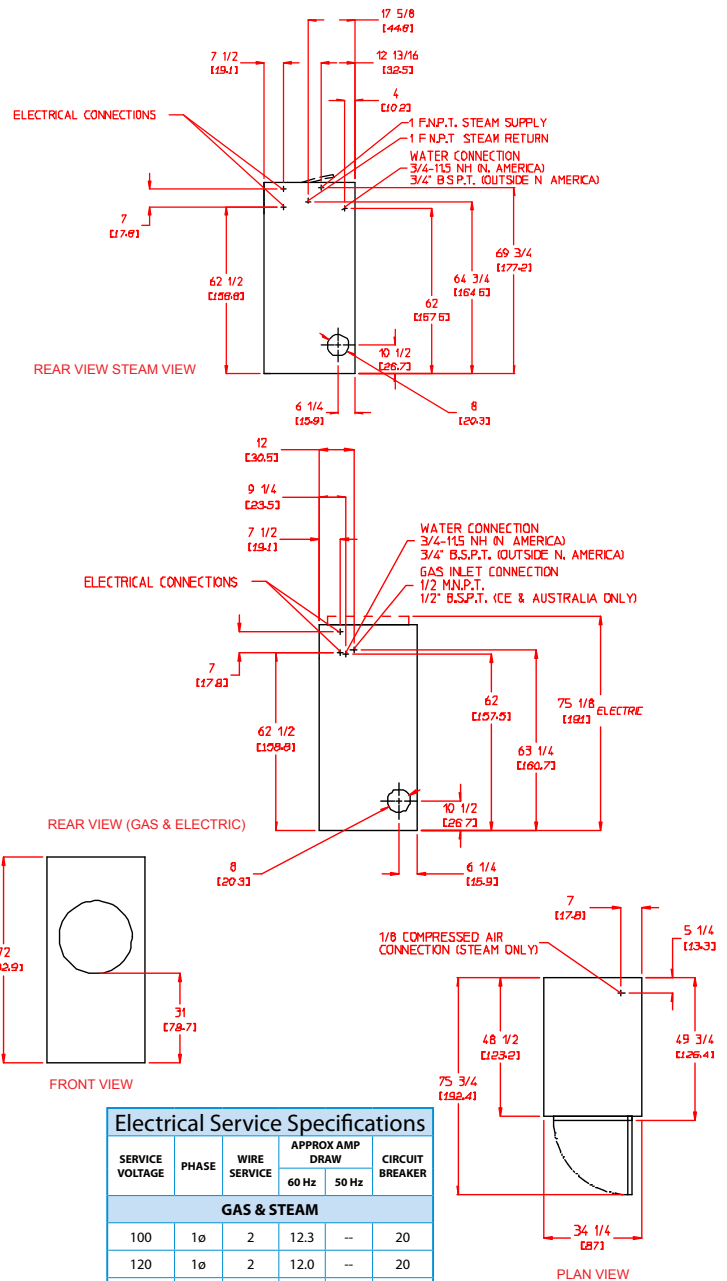
Your local ADC independent authorized distributor



ADC AD-50V

AD-50V Specifications

Tumbler Capacity (dry weight)	50 lbs. (22.68 kg)														
Tumbler Diameter	32-3/4" (83.19 cm)														
Tumbler Depth	37-1/2" (95.25 cm)														
Tumbler Volume	18.30 cu ft (518.20 L)														
Tumbler/Drive Motor (nonreversing/reversing)	3/4 hp / 1/2 hp* (0.56 kW / 0.37 kW)														
Blower/Fan Motor (nonreversing/reversing)	-- / 1/2 hp* (0.37 kW)														
Door Opening (Diameter)	21-1/2" (54.61 cm)														
Door Sill Height	33-1/8" (84.15 cm)														
S.A.F.E. Water Connection	3/4"-11.5 NH (North America) 3/4" B.S.P.T. (Outside North America)														
Dryers per 20' / 40' Container	10 / 20														
Dryers per 53' Truck	24 / 26														
Width	34-1/4" (87 cm)														
Depth	49-3/4" (126.4 cm)														
Height	72" (182.9 cm)														
Airflow gas/electric/steam	60 Hz 750 cfm (21.24 cmm) 50 Hz 625 cfm (17.70 cmm)														
Exhaust Connection (Diameter)	8" (20.32 cm)														
GAS MODEL:	Approx. Net Wt. 651 lbs (295.29 kg) Approx. Ship Wt. 700 lbs (317.51 kg) Heat Input 150,000 btu/hr (37,799 kcal/hr) Inlet Pipe Connection 1/2" M.N.P.T.** 1/2" B.S.P.T. (CE and Australia Only)														
ELECTRICAL MODEL:	Approx. Net Wt. 651 lbs (295.29 kg) Approx. Ship Wt. 700 lbs (317.51 kg)														
<table border="1"> <thead> <tr> <th colspan="2">Oven Size</th> <th rowspan="2">Approx. Net Wt.</th> <th rowspan="2">Approx. Ship Wt.</th> </tr> <tr> <th>kW</th> <th>Btu/hr (kcal/hr)</th> </tr> </thead> <tbody> <tr> <td>20</td> <td>68,200 (17,200)</td> <td rowspan="3">651 lbs (295.29 kg)</td> <td rowspan="3">700 lbs (317.51 kg)</td> </tr> <tr> <td>24</td> <td>81,900 (20,600)</td> </tr> <tr> <td>30</td> <td>102,400 (25,800)</td> </tr> </tbody> </table>	Oven Size		Approx. Net Wt.	Approx. Ship Wt.	kW	Btu/hr (kcal/hr)	20	68,200 (17,200)	651 lbs (295.29 kg)	700 lbs (317.51 kg)	24	81,900 (20,600)	30	102,400 (25,800)	
Oven Size		Approx. Net Wt.			Approx. Ship Wt.										
kW	Btu/hr (kcal/hr)														
20	68,200 (17,200)	651 lbs (295.29 kg)	700 lbs (317.51 kg)												
24	81,900 (20,600)														
30	102,400 (25,800)														
STEAM MODEL:***	Approx. Net Wt. 683 lbs (309.80 kg) Approx. Ship Wt. 733 lbs (332.48 kg) Steam Consumption 142 lb/hr (64.41 kg/hr) Operating Steam Pressure 125 psi max (10.34 bar) Boiler Horsepower (Normal Load) 4.1 Bhp Supply Connection 1" F.N.P.T.** Return Connection 1" F.N.P.T.**														



Electrical Service Specifications

SERVICE VOLTAGE	PHASE	WIRE SERVICE	APPROX AMP DRAW		CIRCUIT BREAKER
			60 Hz	50 Hz	
GAS & STEAM					
100	1ø	2	12.3	--	20
120	1ø	2	12.0	--	20
208	1ø	2	7.1	--	15
220	1ø	2	7.0	5.3	15
230	1ø	2*	--	4.9	15
240	1ø	2	6.5	4.2	15

Specifications in parentheses are metric equivalents.

REV 6/4/12

* Reversing dryers use 3-phase (3ø) motors.

** Size of piping to dryer varies with installation conditions. Contact factory for assistance.

*** Specify air-operated or electromechanical steam damper system. Air-operated steam damper system must be provided with clean, dry, and regulated 80 psi +/- 10 psi (5.51 bar +/- 0.69 bar) air supply.

Electrical Service Specifications

SERVICE VOLTAGE	PHASE	WIRE SERVICE	APPROX AMP DRAW		CIRCUIT BREAKER
			60 Hz	50 Hz	
GAS & STEAM					
208	3ø	3	3.0	--	15
220	3ø	3	3.8	--	15
230	3ø	3	--	3.6	15
240	3ø	3	3.2	--	15
380	3ø	4*	--	2.2	15
400	3ø	4*	--	2.2	15
416	3ø	4*	--	2.3	15
460	3ø	3	2.1	--	15
480	3ø	3	2.1	--	15

Electrical Service Specifications

SERVICE VOLTAGE	PHASE	WIRE SERVICE	APPROX AMP DRAW		CIRCUIT BREAKER
			60 Hz	50 Hz	
30 kW Electric					
208	3ø	3	90	--	125
220	3ø	3	86	84	125
230	3ø	3	79	80	100
240	3ø	3	79	--	100
380	3ø	4*	52	51	70
400	3ø	4*	--	48	60
416	3ø	4*	--	47	60
440	3ø	3	42	--	60
460	3ø	3	40	--	50
480	3ø	3	38	--	50
575	3ø	3	32	--	40
600	3ø	3	31	--	40
20 kW Electric					
208	1ø	2	103	--	150
220	1ø	2	96	--	125
230	1ø	2	93	92	125
240	1ø	2	90	--	125
24 kW Electric					
208	3ø	3	74	--	100
220	3ø	3	70	--	90
230	3ø	3	--	65	80
240	3ø	3	64	--	80
380	3ø	4*	43	42	60
416	3ø	4*	--	38	50
480	3ø	3	31	--	40

P/N 451018 10/10



88 Currant Road Fall River, MA 02720-4781 • 508.678.9000 • Fax: 508.678.9447 • Email: sales@amdry.com

www.amdry.com